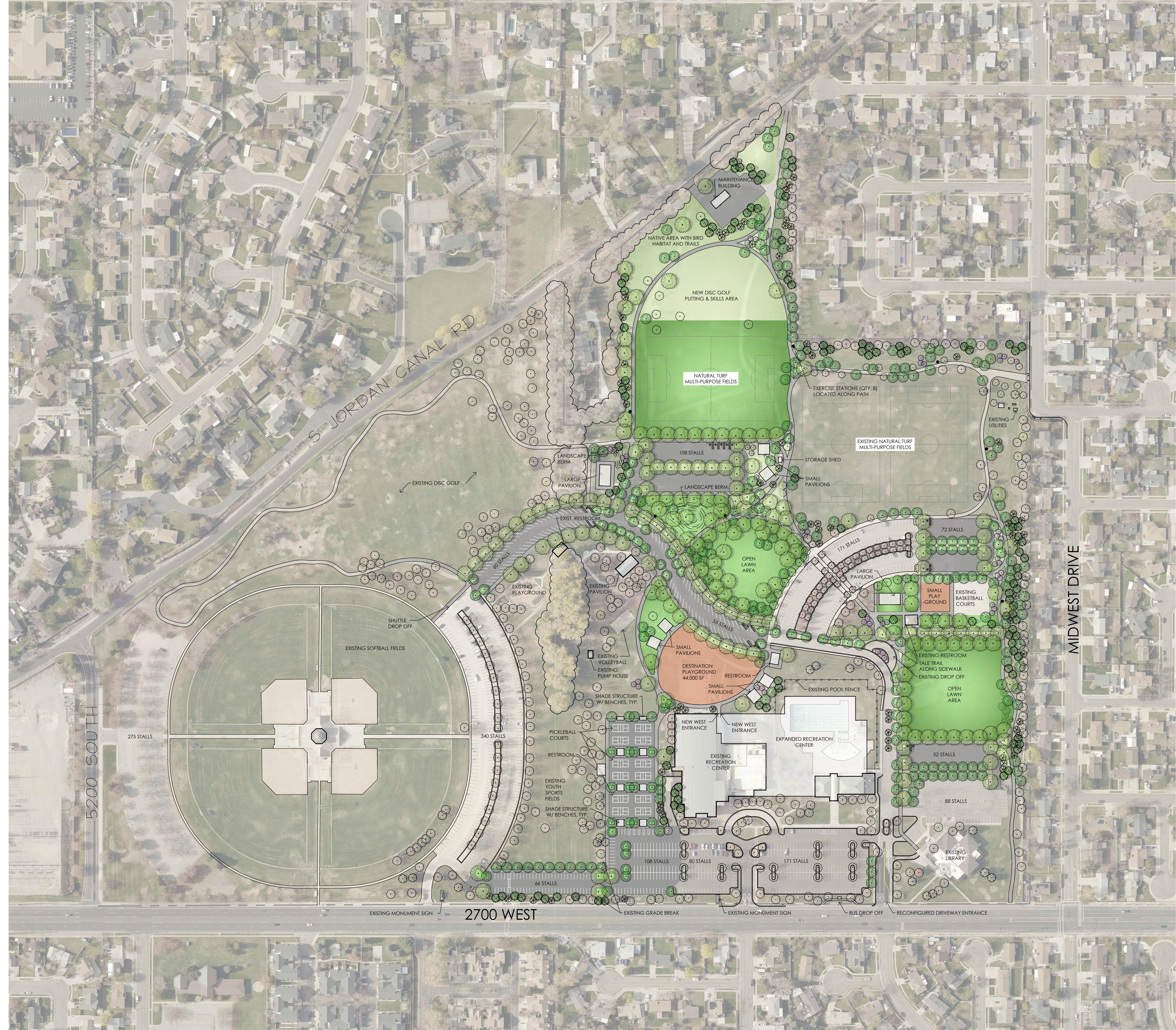


MASTER PLAN PARKING SUMMARY

EXISTING STALLS	1,175
STALLS LOST TO NEW DESIGN	- 127
STALLS ADDED IN NEW DESIGN	+ 921
TOTAL PARKING IN NEW DESIGN	1,569

MASTER PLAN AMENITIES SUMMARY

EXISTING AMENITY	CHANGE	NOTES
BASKETBALL COURTS	NO CHANGE	
BATTING CAGES	REMOVED	
DISC GOLF	RECONFIGURED WITH NEW PUTTING & SKILLS AREA	
LARGE POPLAR GROVE	NO CHANGE	
LARGE SPORTS FIELDS	NO CHANGE (ADDITIONAL FIELDS ADDED)	
MULTI-USE PATHS	RECONFIGURED WITH ADDITIONAL PATHS	
OUTDOOR POOL	CONNECTION TO REC. CENTER EXPANSION	
PAVILION	2 ADDITIONAL RENTABLE PAVILIONS + 6 SMALL ADDITIONAL TABLES ADDED AROUND PARK EXPANDED & CONNECTED TO POOL	
PICNIC TABLES ON PADS	NO CHANGE (ADDITIONAL PLAYGROUND ADDED)	
RECREATION CENTER	NO CHANGE	
SOFTBALL COMPLEX	NO CHANGE	
VOLLEYBALL	NO CHANGE	
PROPOSED AMENITY		
DESTINATION PLAYGROUND	44,000 SF	
PICKLEBALL	12 COURTS ON SOUTH OF REC. CENTER	
EXERCISE STATIONS	8 AT INTERVALS ALONG PATHS	
ADDITIONAL MULTI-PURPOSE FIELD	1 FULL SIZE NATURAL GRASS FIELDS (270'x340')	
ADDITIONAL PLAYGROUNDS	DESTINATION PLAYGROUND ADDED + 1 SMALL EAST OF REC. CENTER PARKING LOT	
BUS DROP OFF	WEST OF LIBRARY & WEST OF DESTINATION PLAYGROUND	
OPEN LAWN AREA	UNFINISHED AREA IMPROVED TO CREATE NEW HABITAT (ESPECIALLY FOR BIRDS AND OWLS)	
IMPROVED NATIVE AREAS		
PARK ELEMENTS	CHANGE	
PARKING LOTS	NEW LOTS ADDED AROUND PARK; SMALL LOT NORTH OF POOL REMOVED, CURVED LOT EXPANDED NORTHWARD, CENTRAL PARKING ALONG CENTRAL DRIVE, NEW LOT AT WEST THUMB, ADDITIONAL WEST OF LIBRARY, EXPANDED REC. CENTER LOT & NEW PARKING ALONG 2700 WEST. PARK CAN BE CIRCULATED INTERNALLY	
PARK DRIVE	NO CHANGE (2 ADDED: NEXT TO DEST. PLAYGROUND & PICKLEBALL COURTS)	
RESTROOMS	LOCATED AT WEST CORNER OF PARK	
NEW MAINTENANCE YARD		



# VALLEY REGIONAL PARK MASTER PLAN

PLAN REFLECTS SALT LAKE COUNTY PARKS AND RECREATION AND REGIONAL PRIORITIES, AS WELL AS CITY AND COMMUNITY INTERESTS.



**G.B.D**  
G. BROWN: DESIGN INC  
SITE AND LANDSCAPE ARCHITECTS

OCTOBER 15, 2025

