

# Salt Lake County Flip the Strip Standards



Salt Lake County is committed to smart water conservation, but we don't want our landscapes turning into heat-trapping rock beds or barren spaces. Our goal is to highlight the beauty of local plants and landscapes that save water while still providing a functional and active refuge for residents.



## Water Wise Landscape DOs



- Add pathways in high-traffic street parking areas so visitors can easily access the sidewalk.
- Use colorful foliage with seasonal interest and use repetition to create order (color, size, shape, etc.),
- Choose plants based on water-wise principles.
- Aim for 75% plant coverage at maturity.
- Keep plant massings (*groups of the same plant that are used for impact, drama, or harmony*) below 20". Accent plants (*individual plants that are used to show off a special feature such as a flowering display*) should be under 36".



## Water Wise Landscape DONT'S



- Use irrigated turfgrass or artificial turf as landscaping materials.
- Use zero-scape landscape treatments which completely eliminate plants and cover the area with pavement, other paving and hardscape materials, gravel, rock, or stone.
- Water the park strip the same amount as your turfgrass.
- Block site lines from driveways or roads or interfere with city maintenance (*plants should be no higher than 36"*).

## DESIGN CONCEPTS

### Plant Arrangements

These examples show two distinct styles for transforming park strips into water-efficient landscapes. Choose the approach that best complements your facility's architecture, needs, and surrounding site.

As your new landscape becomes established, the benefits of a water-wise design become clear, reduced water use, added plant variety, colorful flora, and a welcoming and unique experience for staff and visitors. It also supports the County's goal of being a leader in water conservation across operations.



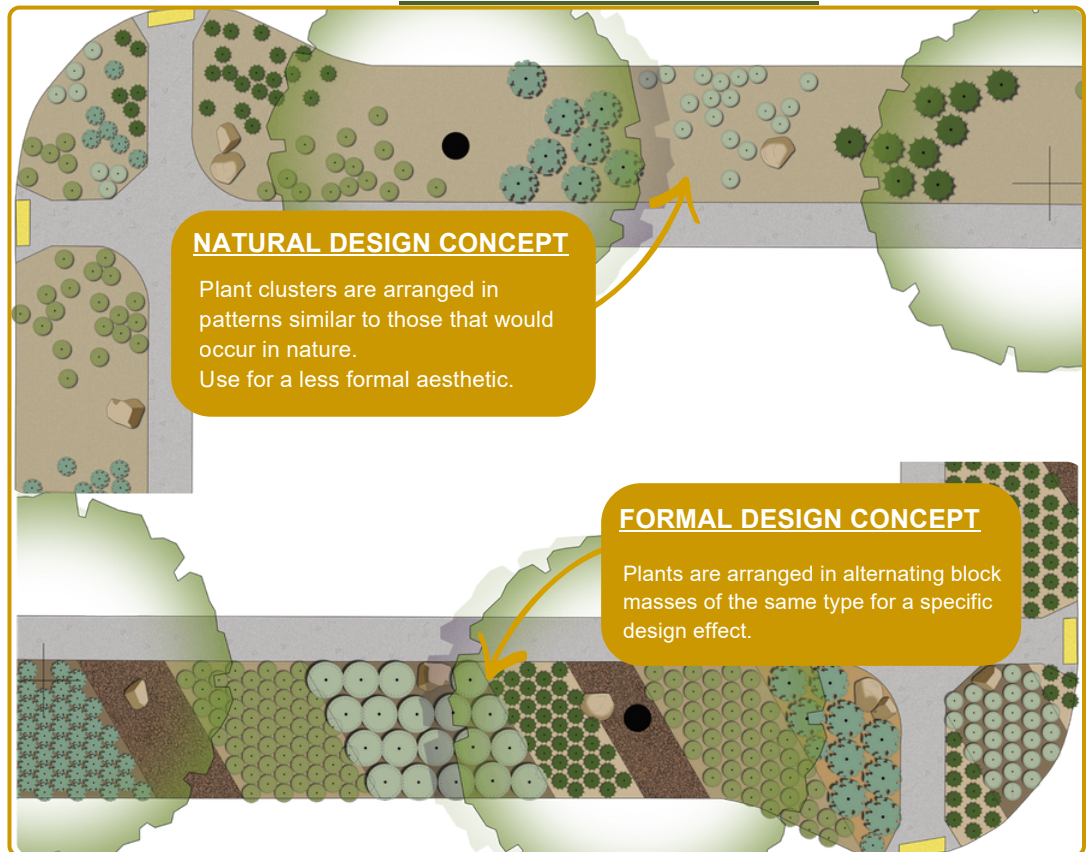
For more designs visit!

### NATURAL DESIGN CONCEPT

Plant clusters are arranged in patterns similar to those that would occur in nature. Use for a less formal aesthetic.

### FORMAL DESIGN CONCEPT

Plants are arranged in alternating block masses of the same type for a specific design effect.



# Salt Lake County Flip the Strip Standards

## Ornamental Grasses

Botanical Name	Common Name	HxW (Inches)
Helictotrichon sempervirens	Blue Oatgrass	48x24
Schizachyrium scoparium	Blaze Little Bluestem	36x30
Bouteloua gracilis	Blonde Ambition Blue Grama	10x12
Pennisetum orientale	Karley Rose Fountain Grass	36x36
Schizachyrium scoparium	Little Bluestem	36x12
Bouteloua curtipendula	Sideoats Grama	40x24

For more Ornamental Grasses Visit the resources linked!

## Perennials

Botanical Name	Common Name	HxW (Inches)
Penstemon pinifolius	Pineleaf Penstemon	12x12
Agastache cana	Sonoran Sunset Hummingbird Mint	30x24
Zauschneria garrettii	Orange Carpet Fire Chalice	8x24
Hymenoxys acaulis	Sundancer Daisy	12x9
Geranium 'Rozanne'	Hardy Geranium	18x24
Echinacea purpurea	Purple Coneflower	36x18
Achillea millefolium	Common Yarrow	24x24

For more Perennials Visit the full Flip the Strip Guidebook

## Shrubs

Botanical Name	Common Name	HxW (Inches)
Caryopteris x clandonensis	Blue Mist Bluebeard	24x48
Lavandula angustifolia	English Lavender	30x24
Prunus besseyi	Pawnee Buttes Sand Cherry	18x60
Mahonia repens	Creeping Oregon Grape	24x60
Rhus aromatica 'Gro-low'	Creeping Juniper	24x72
Caragana pygmaea	Autumn Amber Sumac	18x72
Potentilla fruticosa	Pygmy Pea Shrub	12x24

For more Shrubs Visit the full Flip the Strip Guidebook

## Trees

Botanical Name	Common Name	HxW (Inches)
Celtis Occidentalis	Common Hackberry	50x24
Crataegus Crus Gali	Thornless Hawthorn	25x25
Ginkgo Biloba	Ginkgo	45x30
Gleditsia Triacanthos Inermis	Thornless Honeylocust	45x40
Koelreuteria Paniculata	Golden Raintree	35x35
Maackia Amurensis	Amur Maackia	25x15
Syringa Reticulata "Ivory Silk"	Japanese Lilac Tree	25x20

For more Trees Visit the full Flip the Strip Guidebook

For more resources on water wise plants.  
Visit the resources below!



- Flip the Strip Guidebook
- Flipped Equipped Guidebook
- USU Drought Resources
  - Planting lists & more!
- Utah Water Savers
- Water Use Calculator

