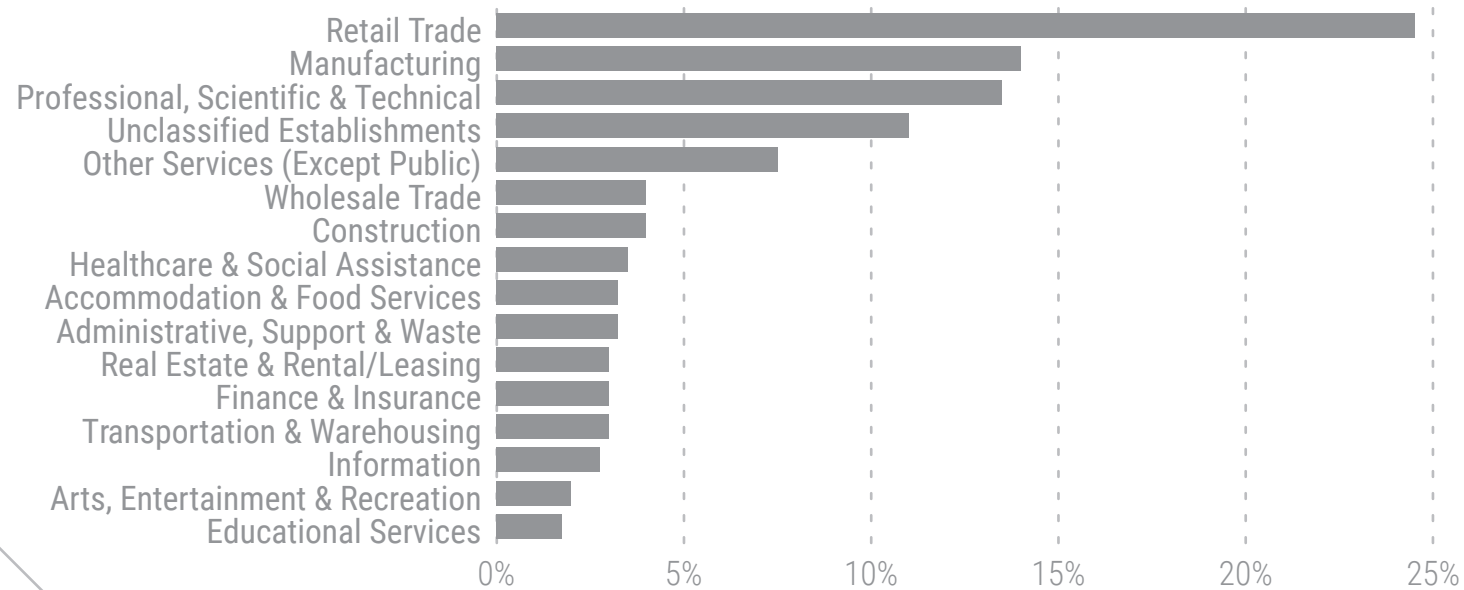


PERCENT OF INDUSTRIES REPRESENTED



INTERVIEW HIGHLIGHTS

“

“I don’t want to double the size of the company. We have to keep the company growth manageable. I don’t want to take any unnecessary risks associated with new employees.”

“Maybe the state could stop giving money the big corporations who aren’t local. It’s frustrating because the money is not going to stay within the state. It’s not growing our economy within the state.”

“The high rent is the biggest problem.”

“The fact that Amazon doesn’t collect any taxes has been really detrimental and they have only started recently collecting taxes because of pressure. I’m angry about the unfair tax laws that favor big corporations instead of small privately-owned businesses.”

“Most of our employees live within a 30 mile radius. Commuting becomes an issue. We have adjusted our hours in order to attract employees who can work shifts that keep them out of rush hour traffic.”

“I come from a country that has a very strong apprenticeship system, and that is lacking here. It is not enough. Personally I feel there is too much emphasis on going to college, and not enough emphasis on trades.”

”

*All remarks were gathered from business decision-makers in your municipality

Salt Lake County

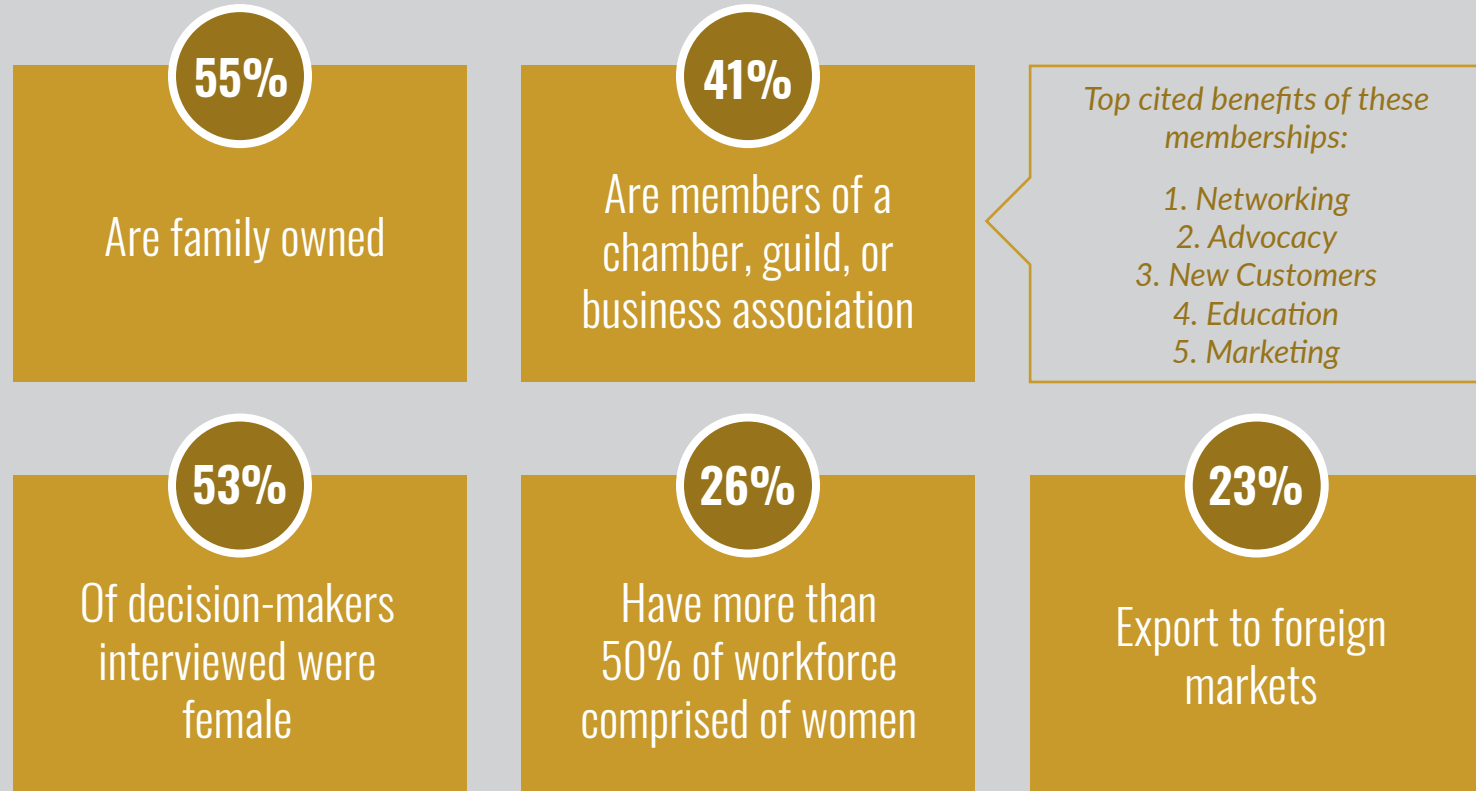
METRO SOLUTIONS

SALT LAKE CITY
BUSINESS OUTREACH REPORT



OF BUSINESSES INTERVIEWED:

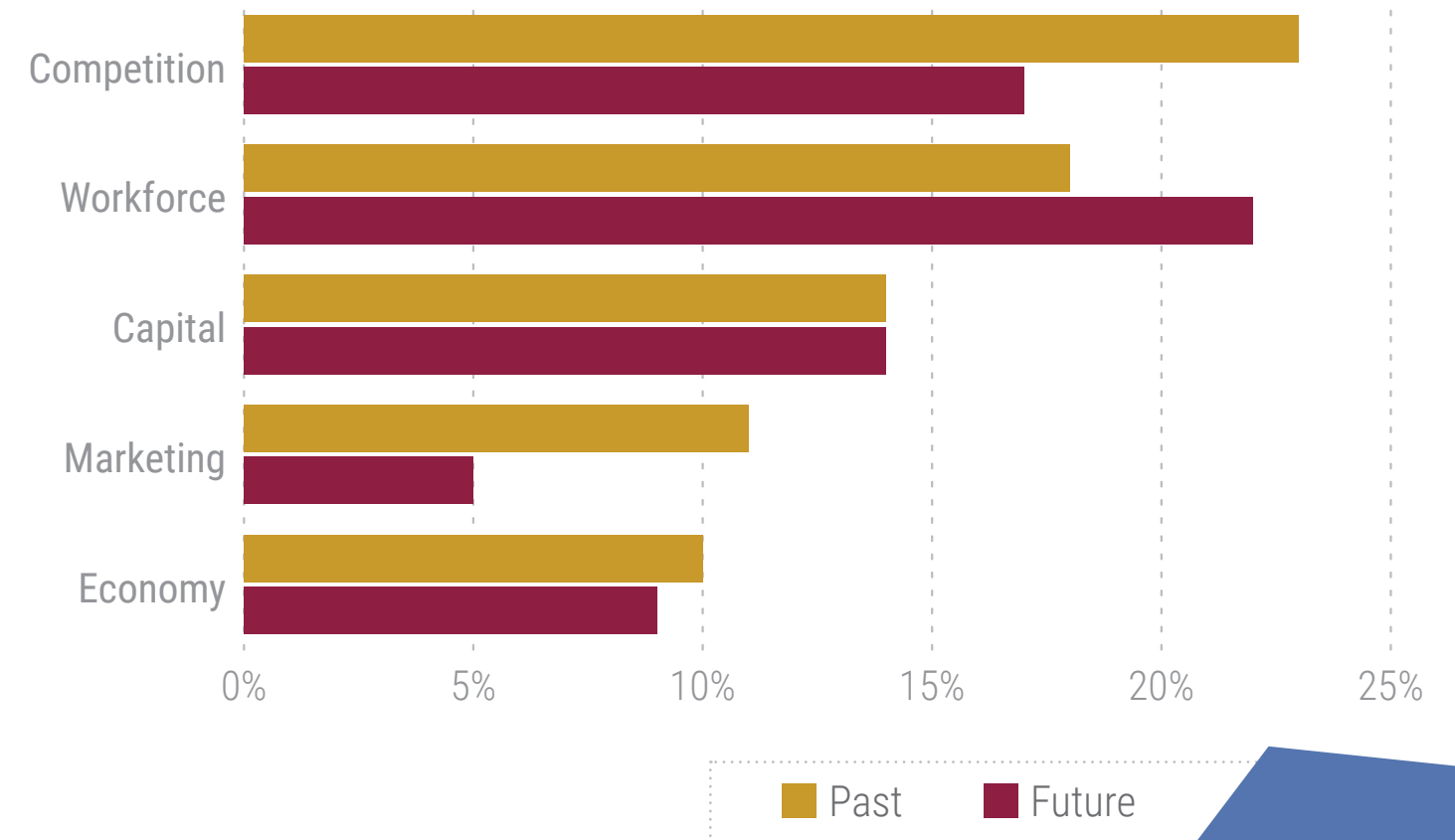
Annual revenues from \$0 to \$200,000,000
Median annual revenue: \$300,000



*Interview data shows when women are in decision-making roles within a business, more women are employed by that business

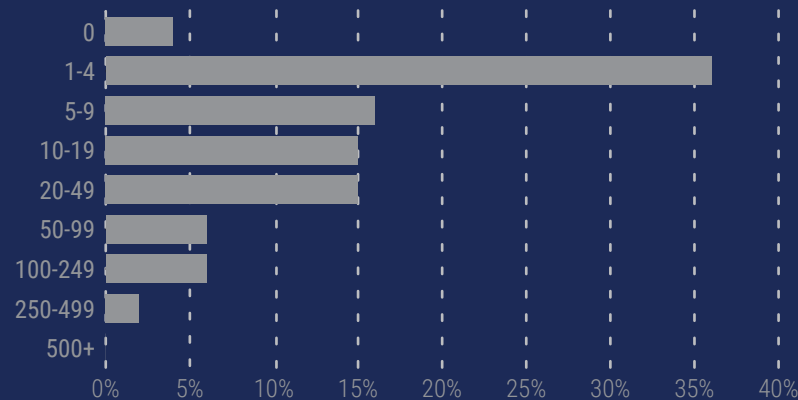
TOP BUSINESS CHALLENGES PAST AND FUTURE

(Percent of Businesses Citing Challenge)

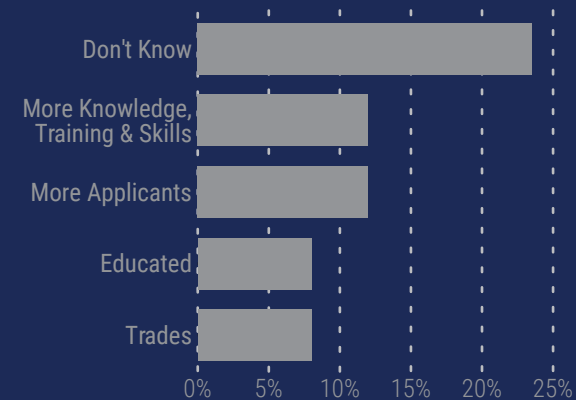


EMPLOYEES & WORKFORCE

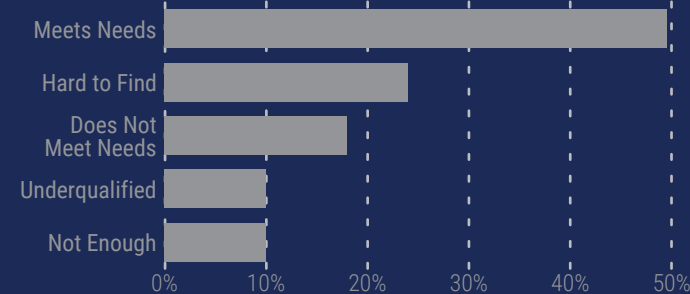
Businesses Interviewed by Employee Count



How could the local workforce better meet your needs?



How does the local workforce fit your company's talent needs?



What challenges do you experience in meeting your workforce needs?

